

YOUR NEAREST TRADESMART MEMBER IS:



# NATIONAL

WELDING & INDUSTRIAL SUPPLIES



1/55 Newton Rd Wetherill Park  
2164 NSW

[nationalwelding.com.au](http://nationalwelding.com.au)

[WWW.TRADESMART.NET.AU](http://WWW.TRADESMART.NET.AU)

P/N: K3030  
**KINCROME: 30PCE COMBO SPANNER SET AF/MET**

- 30pce Spanner Set
- 6 - 24mm (metric)
- 1/4 - 1" (imperial)
- Mirror polished

TradeSmart  
**MATES RATES!**

**\$239<sup>00</sup>**  
GREAT BUY!



**KINCROME**  
PROFESSIONAL QUALITY TOOLS

P/N: TSVIPERCUT40  
**UNIMIG: VIPER CUT PLASMA CUTTER**  
WITH BONUS ACCESSORIES

- 40AMP Plasma Cutter with 15AMP Plug
- Cuts 10mm Mild Steel
- Bonus 1518HF Electrodes
- Bonus 1370 Cutting Tips
- Bonus Welding Helmet

TradeSmart  
**BONUS DEALS!**

**\$599<sup>00</sup>**  
GREAT BUY!



**UNIMIG**  
**VIPER**

P/N: DGHU2.3S-2  
**DUNLITE: 2.8KVA HONDA POWERED GENERATOR**

- GP200 Honda Engine
- Ultra portable
- Lightweight
- Perfect for running all your small power tools



**\$499<sup>00</sup>**  
GREAT BUY!

TradeSmart  
**MATES RATES!**

P/N: KBP014  
**TRIDON: KNIPEX HD PLIER POWER SET**  
WITH BONUS 950510

- 3pce Knipex HD Plier Power Set:
- Includes popular Knipex Cobra (250mm), High Leverage Combination Pliers (200mm) and High Leverage Diagonal Cutters (200mm)
  - Essential tools with long service life
  - Made in Germany

- Universal Shears 160mm
- New with crimp function for end sleeves (ferrules)
  - Precisely ground blades with fine serration for clean, non-slip (nonskid) cut
  - Crimp zone for crimping end sleeves (ferrules) up to a diameter of 6.0mm

**\$199<sup>00</sup>**  
GREAT BUY!



**TRIDON**

**BONUS UNIVERSAL SHEARS**

TradeSmart  
**BONUS DEALS!**

SHOP SMART AT...  
**TRADESMART**

**TradeSmart**  
INDUSTRIAL GROUP  
STRENGTH IN NUMBERS



ON SALE  
1ST NOVEMBER 2018 - 31ST JANUARY 2019



# HOT DEALS STOREWIDE!

POWER TOOLS

# Makita®

# POWER TOOL TIME

\*Offer available until 31<sup>st</sup> December 2018. See Makita.com.au/redemption for claims, full terms & conditions.



**\$399**

**DLX2145**  
18V 2 Piece Combo Kit

Kit includes: DHP458Z, DTD152Z, 2 x BL1830, DC18RC & Carry Case



**\$599**

**DUR364LPT2**  
18Vx2 Brushless Line Trimmer Kit

- Includes 2 x 5.0Ah battery & same time dual port rapid charger
- Powerful Outer Rotor Brushless Motor
- No Load Speed of 6,500 rpm



**\$749**

**DLM460PG2**  
18Vx2 Brushless Lawn Mower 460mm (18") Kit

- Includes 2 x 6.0Ah battery & same time dual port rapid charger
- 18" heavy duty steel deck
- High power brushless motor provides 3,300 rpm

Tool Only



**\$149**

**DGA452Z**  
18V 115mm Slide Switch Angle Grinder

- Anti-restart function for added safety
- Light weight design at just 1.9kg
- Powerful 10,000rpm no load speed delivers ideal performance



**\$79**

**GA5030**  
125mm (5") Angle Grinder

- Slide switch with lock on function
- Design for durability with dust proof construction
- Powerful 720W<sup>^</sup> motor with excellent heat-resistance

Tool Only



**\$259**

**DCG180XZ**  
18V Caulking Gun

- Anti-drip function stops excess sealant from oozing out
- Variable speed control by trigger and dial
- 0-28mm per second no load pushing speed

Continuous rating input

**\$179**

**M2401G**  
355mm (14")

Cut Off Saw

- Reliable 2,000W<sup>^</sup> motor
- Adjustable guide plate with 3 settings
- Cutting capacity of 102x194mm, 70x233mm or 115mm diameter

E&OE / T073-18

## 18 VOLT CORDLESS KIT



**SB18LTXBLI-WBBL** –  
18 Volt Brushless 2 Piece Kit  
AU68901370i

**\$729**  
Inc. GST

- Includes;
- Brushless Hammer Drill 120 Nm
  - Brushless Angle Grinder
  - 2 x 5.2ah Batteries, Charger and Case

## 18 VOLT IMPACT WRENCH

**SSW 18 LTX 400 BL** –  
18 Volt Brushless  
Impact Wrench  
602205890

- Max. Torque 400 Nm
- Powerful Brushless Motor
- 12 Speed and Torque Settings
- Die Cast Aluminium Gear Housing
- Skin Only

**\$329**  
Inc. GST



## 18 VOLT RIVET GUN

**NP 18 LTX BL 5** – 18 Volt Brushless Rivet Gun  
619002890

- Placement Force = 1000 N
- Rivet Ø all materials = 2.4 - 5 mm
- Max. Rivet Ø Aluminium = 6mm
- Complete with Nose Pieces
- Skin Only

**\$899**  
Inc. GST



**NEW**

## ANGLE GRINDER

**WEA 17-125 Quick** – 1,700 Watt 125mm  
Angle Grinder  
600534190



**\$399**  
Inc. GST

- Marathon Motor
- Safety Clutch
- Electronic overload protection, soft start and restart protection

## 355mm CUT OFF SAW



**CS 23-355** – 2300 Watt 355mm Cut  
Off Saw with Bonus Angle Grinder  
602335190

- Spindle lock for easy disc change
- Quick Clamping Device – Mitre From -15° up to 45°
- Adjustable Spark Guide Plate

**\$369**  
Inc. GST

**BONUS**  
W85-125 125mm, Angle Grinder



## ROTARY HAMMER

**KHE 3251** – 800 Watt SDS  
Plus Rotary Hammer  
600659190

- Marathon Motor
- Safety Clutch
- 3.1 Joules Impact Energy

**\$549**  
Inc. GST

**BONUS** 10 Piecer  
SDS Set



**metabo**  
PROFESSIONAL POWER TOOL SOLUTIONS

# SHOP SMART - BUY SMART!

POWER TOOLS



Nothing but **HEAVY DUTY.**<sup>TM</sup>

### M18™ Grease Gun Kit



**\$649.00**  
GREAT BUY!

450g BARREL CAPACITY | 1.2 METRE FLEXIBLE HOSE | LOCKABLE TRIGGER FOR CONVENIENCE



TradeSmart  
**BONUS WORK BOX**

(TOOLS NOT INCLUDED)

### M12™ Soldering Iron



**\$124.95**  
GREAT BUY!

3-STOP PIVOTING HEAD | 18 SECOND HEAT UP TIME | 468°C MAXIMUM TEMPERATURE



### M18™ Power Pack 4B2



**\$1279.00**  
GREAT BUY!

TradeSmart  
**BONUS JOBSITE FAN**



### M18™ D-Handle Jigsaw



**\$359.00**  
GREAT BUY!

FASTER CUTS FOR PRODUCTIVITY  
POWER TO CUT HARD MATERIALS  
MAXIMUM CUTS PER CHARGE



TradeSmart  
**NEW!**

### M12™ Jobsite Radio



**\$99.00**  
GREAT BUY!

**Adaptable Bolt Cutters**  
(14"/18") 48224114  
(24"/30") 48224124

TradeSmart  
**NEW!**

**\$95.00 / \$155.00**  
(14"/18") (24"/30")



### M18 FUEL™ High Torque Impact Wrench with Friction Ring



**\$799.00**  
M18FHIWF12-502C

TradeSmart  
**BONUS BATTERY**

### M12™ Compact Battery M12B3

**\$89.00**  
GREAT BUY!



### M12™ Compact Inflator M12BI-0



TradeSmart  
**NEW!**

**\$109.00**  
GREAT BUY!



**NOW AVAILABLE!**

OFFER ENDS 31ST JANUARY 2019

FREIGHT CHARGES MAY APPLY





CUTTING / ABRASIVES

**flexOvit**

**NORTON**  
SAINT-GOBAIN

**NORTON clipper**  
SAINT-GOBAIN

**FLEXOVIT Ultra Thin Cut Off Wheels**



**\$44.95**  
MINI TUB

**\$2.95**  
EACH  
GREAT VALUE!

- The next innovation in cutting wheels
- Offering comfort, stability and precision

66252841594	25x Mini Tub Ultra Thin	125 x 1.0 x 22.23mm
66253370633	iOn Cordless	125 x 1.0 x 22.23mm
66253370636	Multi Material	125 x 1.0 x 22.23mm
66252837155	Maxx Inox	125 x 1.0 x 22.23mm

- Ultra thin premium grade
- Steel & stainless
- Fillers free of iron, sulphur & chlorine

**FLEXOVIT Cut Off Wheel**



**\$9.95**  
EACH  
GREAT VALUE!

- Low speed portable chop saws - metal
- Increased life time and cut renewal

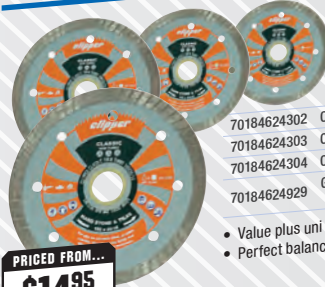
**BEAR PVC Duct Tape**



**\$3.95**  
EACH  
GREAT VALUE!

- 63642548313 48mm x 30m Silver
- Versatile repair tape
- Excellent stretch, conformability
- Highly durable

**NORTON CLIPPER Turbo Diamond Blade**



PRICED FROM...  
**\$14.95**  
EACH

70184624302	Classic Thin Turbo	105 x 1.7 x 8 x 20/16mm	\$14.95
70184624303	Classic Thin Turbo	115 x 1.7 x 8 x 22/20mm	\$19.95
70184624304	Classic Thin Turbo	125 x 1.7 x 8 x 22/20mm	\$29.95
70184624929	General Purpose - VP Turbo	230 x 1.2 x 10 x 25mm	\$34.95

- Value plus uni
- Perfect balance between price and performance

**NORTON EXPERT Wire Cup Brushes**



PRICED FROM...  
**\$22.95**  
EACH

00210013517	65 x Multi Twistknt 0.50 - Steel	\$22.95
00210013483	75 x Multi Twistknt 0.50 - Steel	\$25.95
00210013616	100 x 1R X M14x2 Skirt Twistknt 0.50 - Steel	\$49.95

- Industrial quality; aggressive material removal

**NORTON EXPERT Wire Wheel Crimped**



PRICED FROM...  
**\$31.95**  
EACH

00210013500	150 x 18 x Multi 0.30 - Steel	\$31.95
00210013566	200 x 25 x Multi 0.30 - Steel	\$45.95

- For use on bench grinders
- Flash removal, edge blending, deburring etc

Flexovit, Norton, Bear and Clipper are registered trademarks of Saint-Gobain Abrasives, Pty. Ltd.

**The Tradie 10-Pack CUT-OFF WHEELS**

- ✓ 10 Cut-Off Wheels in handy screw top storage tin
- ✓ Perfect for the tradie
- ✓ Cuts mild steel & stainless steel (INOX)
- ✓ Ideal for cordless angle grinders

Stainless steel  
**INOX**

Steel

125 (5") x 1.0mm

**\$19.95**  
EACH TIN  
INCL. GST

P/N: 69121041

**PFERD**



**BURR SETS**  
1/4" Shank

5pc ALUMINIUM

**\$259.00**  
INCL. GST

P/N: 26005695

10pc

**\$319.00**  
INCL. GST

P/N: 26005694

5pc

**\$159.00**  
INCL. GST

P/N: 26005693

MADE IN  
**GERMANY**  
SINCE 1897

**OSA**  
Safety Code

**X-TREME**  
Cutting Performance



www.pferd.com

A family business built upon  
**TRUST, INNOVATION**  
**QUALITY & RELIABILITY**

**BREMICK**



**suttontools**  
world class cutting tools

TOOL DEALS YOU NEED

**GREAT VALUE!**



**101 Pce Blue Bullet Metric Drill Set + BONUS 25ml Venom Cutting Paste**

Sizes: 1.0–10.0mm x 0.5mm rises

**BONUS**  
25ml Venom Cutting Paste

**\$2990**  
INC GST  
P/N: D102 SM101



**25 Pce Blue Bullet Metric Drill Set**

Sizes: 1.0–13.0mm x 0.5mm rises

**\$14900**  
INC GST  
P/N: D102 SM3



**29 Pce Blue Bullet Imperial Drill Set**

Sizes: 1/16 – 1/2 x 64ths

**\$16400**  
INC GST  
P/N: D102 S3



**5 Pce 3/8" & 1/2" Carbide Bur Set**

Cyl/Sq SA300, Cyl/Rad SC300, Ball SD500, Tree/Rad SF300, Cyl/Sq Al Cut SF500

**\$19900**  
INC GST  
P/N: B900 SGB5



**Die Grinder Kit**

- Pneumatic Die Grinder
- Collets: 1/8", 1/4", 3 & 6mm
- 2 x Wrenches

**\$9900**  
INC GST  
P/N: B902 0002

**11 Pce Cobalt Holesaw Set**

General Engineering Set  
Holesaws: 19, 22, 25, 32, 35, 38, 44, 51, 57, 63 & 76mm



**\$29900**  
INC GST  
P/N: H105 S14

**6 Pce Viper Holesaw Set**

Electrician Set  
Holesaws: 16, 20, 25, 32, 40 & 51mm



**\$7900**  
INC GST  
P/N: H114 S9



**10 Pce Screw Extractor Set**

10 Pieces: # 1–# 5 screw extractors includes left hand cobalt jobber drills 2.0, 3.0, 4.0, 5.5, 7.5mm jobber drills

**\$6900**  
INC GST  
P/N: M603 S20L



**12 Pce Needle File Set**



Pillar, Half Round, Crossing, Knife Edge, Warding, Three Square, Square, Oval, Round, Barrett, Crochet, Pillar (Round Edges).

**\$13900**  
INC GST  
P/N: M305M06D



**3 Pce HSS Step Drill Set**  
4–12, 4–20, 6–36mm

**\$16900**  
INC GST  
P/N: 107SD0003



**3 Pce HSS Countersink Set**  
8.3, 12.4, 20.5mm

**\$4795**  
INC GST  
P/N: 107CS0003



**19 Pce Quickbit Set**

7 x Quickbit Drills: 1.95–5mm  
1 x Quickbit Adaptor  
9 x 50mm Screwdriver Bits: PH1, PH2, PH3, PZ1, PZ2, PZ3, SL4, SL5 & SL6  
1 x 1/4" Hex Countersink  
1 x Carry Case

**\$4695**  
INC GST  
P/N: 15080PHX



**Rethink Thread Repair. Think Recoil®**

**Range Kits**

Provides you with an all-in-one workshop solution for multi-diameter thread repairs. It's ideal for garages and other workshops where thread repairs are often undertaken.

Contents:

- HSS Drill Bits
- HSS Intermediate STI Taps
- Thread Inserts
- Installation Tool
- Magnetic Tang Removal Tool
- Installation Instructions

Size	Item #	Price (INC GST)
Metric M5 – M12	RC35004R	\$239.00
Metric M6 – M16	RC35005R	\$329.00
UNC 1/4 – 1/2	RC33004R	\$279.00
UNF 1/4 – 1/2	RC34004R	\$279.00

Promo # 1433



**25 Year Warranty on**

**Australian Made Vices & Clamps\***

[www.dawntools.com.au](http://www.dawntools.com.au)

\*standard warranty terms & conditions



**FREIGHT CHARGES MAY APPLY**







# GIFT CARDS

AVAILABLE IN SELECTED STORES

## DRILLING / CUTTING / TOOLS

### BLACK PANTHER ELECTRICIAN'S SCISSORS

#### Features

- 15mm Cable notch for cutting up to 38mm wire
- High quality Japanese steel blades

**\$26<sup>95</sup>**  
29-513



### ULTIMAX WOOD CHISELS 3 PACK

#### Features

- Fully hardened blade for long life
- Forged steel core with through tang design

#### Contents

- 12mm (1/2"), 19mm (3/4") and 25mm (1")



**\$58<sup>95</sup>**  
WG-3PS

**Sterling**

### 4 PCE MULTI-TOOL BLADE SET

#### Contents

- Multi-fit shank fit most multi-tool brands
- 4 most popular blades for timber + construction applications



**\$35<sup>95</sup>**  
HAMAK

### THUNDER ZONE 10 PCE IMPACT BIT SET

#### Contents

- 4x Phillips® #2 x 50mm
- 1x Square #2 x 50mm
- 1x Square #3 x 50mm
- 2x HEX #5 x 50mm
- 1x Nutsetter 5/16" x 65mm
- 1x Nutsetter 3/8" x 65mm



**\$15<sup>95</sup>**  
TBS10

**Alpha**

### TUFFBOX™ DRILL SETS

#### Features

- GOLD Series outperforming drill bits
- Tough plastic case
- 135° split point for faster drilling
- Feeds and speeds chart inside every drill set



**\$129**  
SM25PB

- #### Contents
- 25 Piece - Metric
  - 1.0 - 13.0mm in 0.5mm increments

**\$159**  
SI29PB

- #### Contents
- 29 Piece - Imperial
  - 1/16 - 1/2" in 1/64" increments

**Alpha**

## TRADEMASTER INDUSTRIAL TOOLS

### 300MM X 180MM CAPACITY BANDSAW

**\$1295.00**  
GREAT VALUE

UE712A



- Swivel vice enables 0° to 45° mitre cuts
- Hydraulic downfeed
- 1HP, 240V
- 4 speed belt drive
- Round cut capacity: 90° : 180mm, 45° : 110mm

### PROFESSIONAL MECHANICS BENCH VICES

- Rugged all cast iron construction
- Integrated anvil for shaping and beating
- Extra heavy-duty sliding jaw and large diameter screw
- 50 ± 5 HRC hardened carbon steel jaws



Part No.	Jaw Width	Weight	Inc. GST
TM100-075	75mm	7.5kg	\$72.95
TM100-100	100mm	10.0kg	\$105.00
TM100-125	125mm	15.5kg	\$149.00
TM100-150	150mm	18.0kg	\$179.00
TM100-200	200mm	31.0kg	\$265.00

### FABRICATED STEEL BENCH VICES

- Offset jaw
- Precision machined knurled jaws with V-Groove
- Large diameter screw
- Precise sliding jaw
- Extra heavy-duty



Part No.	Jaw Width	Weight	Inc. GST
TM104-100	100mm	11.2kg	\$129.00
TM104-125	125mm	20.3kg	\$259.00
TM104-150	150mm	25.0kg	\$279.00
TM104-200	200mm	60.0kg	\$729.00

### 350MM COLD CUT T.C.T. SAW

- Cuts through RHS steel up to 120mm x 120mm
- Offers an accurate, fast & clean cold cut
- 3HP, 240V motor
- 90° - 45° swivel vice
- Supplied with T.C.T. mild steel blade



**\$699.00**  
GREAT VALUE

S14

### FORGED STEEL CLAMPS

- Swivel pad ensures even pressure is applied on angular work pieces



Part No.	Span x Depth	Force	Inc. GST
EC-G16CS	160 x 80mm	300 KG	\$32.00
EC-G20CS	200 x 100mm	450 KG	\$42.00
EC-G25CS	250 x 120mm	550 KG	\$52.00
EC-G30CS	300 x 140mm	670 KG	\$62.00
EC-G40CS	400 x 175mm	1000 KG	\$82.00
EC-G60CS	600 x 175mm	1000 KG	\$95.00
EC-G80CS	800 x 175mm	1000 KG	\$109.00

### PEDESTAL DRILL

- 16mm capacity
- 16mm B16 chuck
- #2 MT Spindle
- 3/4HP, 240V motor
- 16 speed
- 1580mm height
- 60kg



**\$489.00**  
GREAT VALUE

TD1316F

### PLATE & PIPE BEVELLING MACHINE

- Newly designed single milling head with 10 square inserts which is fast & easy to set up
- Universal guide system bevels plate & pipe Ø150 - 300mm
- Low vibration model
- 0 to 60° working range
- 21mm max bevel width
- 1600W induction motor
- 2800rpm
- 21kg



**\$3099.00**  
GREAT VALUE

WA-BM21



**FOLLOW US ON TWITTER**

**@TRADESMARTGROUP**

**TOOLS**



**CRESCENT Lufkin**

**\$34<sup>95</sup>**  
GREAT VALUE!

Mat no: CSD25  
**25Pc Screwdriver Set**

- Tri Lobe acetate handles
- Chrome vanadium shafts with magnetic tips



**CRESCENT Lufkin**

**NEW!**

**GEAR DRIVE** **NO BELTS SLIP STRETCH** **COUNTER TO 9999.9** **FASTER THAN AN ANGLE MEASURE**

Mat no: PSMW48MCLB  
**Centreline Measuring Wheel**

- Pistol-grip handle
- Anti-break joint
- Gear drive
- Kickstand

**\$109<sup>00</sup>**  
HOT PRICE!



- Ergonomic compact case design
- 4-Rivet end hook

**GU GEARWRENCH 120XP**

Mat no: 83065  
**31Pc SAE/Metric 1/2" Drive Socket Set**

- 12 Point Standard sockets
- 120XP ratchet



**\$119<sup>00</sup>**  
83065

Mat no: 83067  
**38 Pc. SAE/Metric 1/4" & 3/8" Drive Socket Set**

- 6 & 12 Point sockets



**\$109<sup>00</sup>**  
83067



**BAHCO**

**34 PIECE 1/4" & 3/8" DRIVE SOCKET SET**  
PN: S330  
Made of high performance alloy steel with a matt finish. ISO 1174 and DIN 3120.

**\$85<sup>00</sup>**  
GREAT VALUE!



**ADJUSTABLE WRENCH**  
PN: 9031-T  
200mm (8") wrench with slim jaws and extra wide opening of 38mm. Tradesmen quality, European made and developed according to the scientific ERGO™ process. With comfortable and non-slip thermoplastic grip handle, the jaw does not fall out even at maximum opening of the wrench. 40% wider opening and 45% thinner jaws compared to a standard adjustable wrench.

**\$54<sup>95</sup>**  
GREAT VALUE!



**3 PCE 250MM (10") ERGO™ HANDLED FILE SET**  
PN: 1-473-10-2-2  
European made to Tradesmen Quality, with file handle developed according to the scientific ERGO™ process. High removal rate. Includes: 1 x Hand File 2nd Cut, 1 x Half Round 2nd Cut, 1 x Round 2nd Cut.

**\$59<sup>95</sup>**  
GREAT VALUE!

**WRECKING KNIFE**  
PN: SB-2448  
Blade hardened to 58-61 Hrc for a long lasting edge, 4mm thick blade for heavy duty use, and 100mm long blade which increases the striking area. Heavy duty product made from impact resistant PPE.



**\$27<sup>95</sup>**  
GREAT VALUE!



**12 PIECE COMBINATION RATCHET SPANNER SET**  
PN: 1RM/SH12  
Sizes in set 8, 9, 10, 11, 12, 13, 14, 15, 16, 17, 18 and 19mm.

**\$179<sup>00</sup>**  
GREAT VALUE!

**KINCROME C SUMMER TRADE SALE**

PROFESSIONAL QUALITY TOOLS

**\$299**  
GREAT VALUE!

TradeSmart BONUS DEALS!



SPECIAL BUNDLE DEAL

**Socket Set Bundle METRIC & IMPERIAL**

- 24 LOK-ON™ 1/2" Metric & Imperial Standard Sockets
- 5 LOK-ON™ 1/2" Socket Accessories
- 9 LOK-ON™ 1/2" Drive Metric Deep Sockets

**\$219**  
GREAT VALUE!



**Socket Set 18 Piece METRIC**

- 13 LOK-ON™ Metric Deep & Standard Sockets
- 5 LOK-ON™ Socket Accessories

**\$299**  
GREAT VALUE!



**Socket Set 28 Piece METRIC**

- 24 LOK-ON™ Metric Deep & Standard Sockets
- 4 LOK-ON™ Socket Accessories

K27021

415mm x 185mm x 55mm

**FROM \$199**  
GREAT VALUE!

**POWER PAK II**

- Lithium ion technology - Holds 80% shelf charge for up to 6 months
- Recharges electronic devices
- Protective carry case included



KP1405 14.8Wh (3700 mAh) \$199

KP1406 22.2Wh (6100 mAh) \$269

**\$2799**  
GREAT VALUE!

**WORKSHOP KIT**

**329 PIECE 15 DRAWER**

- 1/4", 3/8" & 1/2" LOK-ON™ Sockets & Accessories
- Measurements: 745 x 475 x 1425mm



K1501



FREIGHT CHARGES MAY APPLY





TOOLS

**KINCROME**  
PROFESSIONAL QUALITY TOOLS

**SUMMER TRADE SALE**

**KINCROME**  
PROFESSIONAL QUALITY TOOLS

**NEW**

FROM **\$3.75**  
GREAT VALUE!

**SELF CUT CABLE TIE RANGE**

- Indoor use (Natural)
- Indoor & Outdoor Use (Black)
- 22kg High Tensile strength
- RoHS Compliant • UV Protection (Black)
- Save time during installation with a single twist and no additional cutting tool needed



K15800	Self-Cut® Tie 200mm x 4.0mm 20 Pack Black	\$3.75
K15801	Self-Cut® Tie 200mm x 4.0mm 100 Pack Black	\$12.95
K15802	Self-Cut® Tie 280mm x 4.0mm 20 Pack Black	\$4.75
K15803	Self-Cut® Tie 280mm x 4.0mm 100 Pack Black	\$17.95
K15804	Self-Cut® Tie 355mm x 4.0mm 20 Pack Black	\$5.75
K15805	Self-Cut® Tie 355mm x 4.0mm 100 Pack Black	\$22.95
K15806	Self-Cut® Tie 200mm x 4.0mm 20 Pack Natural	\$3.75
K15807	Self-Cut® Tie 200mm x 4.0mm 100 Pack Natural	\$12.95
K15808	Self-Cut® Tie 280mm x 4.0mm 20 Pack Natural	\$4.75
K15809	Self-Cut® Tie 280mm x 4.0mm 100 Pack Natural	\$17.95
K15810	Self-Cut® Tie 355mm x 4.0mm 20 Pack Natural	\$5.75
K15811	Self-Cut® Tie 355mm x 4.0mm 100 Pack Natural	\$22.95



EACH **\$39.95**  
GREAT VALUE!

**KINCROME**  
PROFESSIONAL QUALITY TOOLS

**BALL POINT HEX KEY SET**

- 9 PIECE **METRIC**
- Sizes: 1.5 x 14 x 90mm - 10.0 x 40 x 224mm
  - Long Series **K5043 \$39.95**

**BALL POINT HEX KEY SET**

- 9 PIECE **IMPERIAL**
- Sizes: 1/16" x 14 x 90mm - 3/8" x 40 x 224mm
  - Long Series **K5042 \$39.95**

**TORX® SET**

- 9 PIECE **TORX®**
- Sizes: T10 x 20 x 90mm - T50 x 50 x 235mm
  - Long Series **K5009 \$39.95**

**TAMPERPROOF TORX® HEX KEY SET**

- 9 PIECE **Tamperproof TORX®**
- Sizes: T10H x 14 x 90mm - T50H x 40 x 224mm
  - Long Series **K5044 \$39.95**



**\$20.95**  
GREAT VALUE!

**KINCROME**  
PROFESSIONAL QUALITY TOOLS

**PRECISION SCREWDRIVER SET**

- 6 PIECE **ACETATE**
- Contains: Blade - 1.4mm, 2.0mm, 2.4mm, 3.0mm, Phillips - No.0, No.1
  - K5015**



**RENNSTEIG**

**Slitting Chisel**  
Bent 25° Part No. 380241C

- For chasing, cutting and slitting
- Bent version for better clearance



**\$41.95**  
GREAT VALUE!

**Chisel, Pin, Taper & Centre Punch Tool Roll 11pc**

- Part No. **REN02**
- Set of 11 chisels and punches in handy canvas tool roll with clip



**\$139.00**  
GREAT VALUE!

**Parallel Pin Punch XXL Set 5pc**

- Part No. **425154**
- Set of five parallel pin punches XXL in foam tray with quality case
  - Heat treated for the perfect balance of hardness, strength and durability



**\$199.00**  
GREAT VALUE!

**Parting Chisels**

- Used to separate or cut off a section of material from the main workpiece



Part No.	Thickness	Length	Price
393002	2mm	125mm	\$24.95
393003	3mm	125mm	\$24.95
393004	4mm	150mm	\$27.95
393005	5mm	150mm	\$27.95

**Striking Tool Bonus Pack**

Part No. **RBP002**

- Set of eight chisels and punches in foam tray
- Tools neatly stored in high quality EVA foam tray



**\$99.00**  
GREAT VALUE!

**Hollow Wad Punch Set 9pc**

- Part No. **140900**
- For stamping out or producing gaskets and seal rings from materials such as rubber, leather, felt, plastic, cork, fabric or similar



**\$125.00**  
GREAT VALUE!

**Centre & Parallel Pin Punch Set 8pc**

- Part No. **REN01**
- Set of seven pin punches and one centre punch



**\$75.00**  
GREAT VALUE!

**Flat Cold Chisel Set 3pc**

- Part No. **RCC3**
- Set of three flat cold chisels in durable fabric wallet



**\$59.95**  
GREAT VALUE!

**BONUS 3pc Screw Extractor Set**



**MADE IN GERMANY**



FOLLOW US ON

FACEBOOK

FACEBOOK.COM/TRADESMARTGROUP

EQUIPMENT

**DUNLITE**  
power  
equipment

**WATER  
MASTER**  
PUMP PRODUCTS



**BEST SELLER!**  
**\$749**

POWERED BY  
**HONDA.**  
1.5" HONDA GX160 POWERED FIRE  
FIGHTING PUMP  
P/N: MH15-SHP

- Max. head 74.5m
- Max. Flow rate 390 L/min
- 1.5" suction, 1.5" x 1, 1" x 2 discharge



**HOT SPECIAL!**  
**\$139**

HOSE KIT TO SUIT 1.5" FIRE PUMP  
P/N: FFK01-B

- 1 x 6 metre 3/4" delivery hose with fire spray nozzle
- 1 x 4 metre suction hose w/ strainer



**GREAT VALUE**  
**\$2099**

POWERED BY  
**HONDA.**  
8 kVA HONDA GX390 POWERED  
GENERATOR  
P/N: DGUH7S-2

- Italian NSM Alternator
- Popular choice for farmers and builders



**SUPER SPECIAL**  
**\$2599**

POWERED BY  
**HONDA.**  
7 kVA HONDA GX390 POWERED  
WELDER GENERATOR  
PN: DGWGH7S-2

- 2 x 15 Amp outlets
- 200 Amps at 60%
- Weld leads available (optional extra)



All generators advertised are Honda Australia Approved  
Powering the Nation - Since 1936  
[www.dunlite.com.au](http://www.dunlite.com.au)

**Abbott & Ashby**  
"The reputable name in bench grinders for 40 years"

ATBG600/8 BENCH GRINDER 200MM/8" 600W  
PLUS ATPED-HDK Heavy Duty Pedestal

**SPECIAL  
BUNDLE OFFER**

**\$299**  
GREAT VALUE!

KIT ORDER  
CODE:  
805278



**BENCH GRINDER 200MM/8" 600W**

- Industrial 200mm Bench Grinder
- Powerful Induction Motor Full 3/4 HP PLUS, the most powerful bench grinder in its class.
- 600 watt - 240 volt with standard 10 amp plug
- 25mm wide grinding wheels with 36 and 60 grit wheels standard for fast removal of material
- 50mm wide wheel guards to accept the use of wire wheels without fouling for greater user protection

**Heavy Duty Pedestal**

- Suits most bench grinders
- Easy to assemble with included tools
- Coolant cup mounting bracket
- Height: 860mm Weight: 14.0kg

**WHITE**  
INTERNATIONAL

**LAVOR** **PRO**

works for you

TradeSmart  
MATES RATES!

**VERTIGO20**

- 2100PSI
- 6.7LPM
- Low Maintenance Induction Motor
- Automatic Stop System
- Built-In Detergent Tank
- Hose Reel
- Turbo Lance

**\$399**  
BEST VALUE!

P/N: VERTIGO20

INDUCTION  
MOTORS

**VERTIGO28**

- 2610PSI
- 8.5LPM
- Turbo Lance
- 10 Metre HP Hose
- Hose Reel
- 4 QR Spray Nozzles

**\$649**  
SUPER DEAL!

P/N: VERTIGO28



**MARSHALL2900**

- 2900PSI
- 10.5 LPM
- 6.5 HP
- Steel Frame
- Pressure Regulator
- Gasoline Engine
- Hose Reel
- Turbo Lance

**\$599**  
AWESOME VALUE!

P/N: MARSHALL2900

COLD WATER  
HIGH PRESSURE  
CLEANERS



**TUCSON1211**

- 2000PSI
- 11.0LPM
- 4 Pole Electric Motor
- Automatic Stop System
- Built-In Detergent Tank
- Hose Reel
- Turbo Lance

**\$1,890**  
POWER DEAL!

P/N: TUCSON1211



FREIGHT CHARGES MAY APPLY





GENERAL

# RICHMOND<sup>®</sup>

WHEEL & CASTOR CO

CASTORS FOR ALL APPLICATIONS!

## 200 SERIES CASTORS



WHEEL DIAMETER: 80mm  
LOAD CAPACITY: 100kg

WHEEL TYPE: Rebound Rubber

## 200 SERIES CASTORS



WHEEL DIAMETER: 100mm  
LOAD CAPACITY: 150kg

WHEEL TYPE: Poly Nylon

## 200 SERIES CASTORS



WHEEL DIAMETER: 125mm  
LOAD CAPACITY: 200kg

WHEEL TYPE: Nylon

## HEAVY INDUSTRIAL



WHEEL DIAMETER: 100mm  
LOAD CAPACITY: 250kg

WHEEL TYPE: Poly Cast Iron

## ALL STATES TRAILER SPARES

astss.com.au

### JOCKEY WHEELS



#R2115  
**\$29<sup>95</sup>**  
6" SOLID NO CLAMP  
STATIC WEIGHT 350kg

#R2124A  
**\$69<sup>95</sup>**  
8" BOLT ON SWING AWAY  
STATIC WEIGHT 350kg

#R2112HD  
**\$89<sup>00</sup>**  
STATIC WEIGHT 750kg

#R2112A  
**\$49<sup>95</sup>**  
6" BOLT ON SWING AWAY  
STATIC WEIGHT 350kg

10" BOLT ON SWING AWAY  
STATIC WEIGHT 350kg

#R2114UB  
**\$79<sup>00</sup>**

HD 6" JOCKEY WHEEL INCLUDING CLAMP 750KG

HEAVY DUTY

HUGE RANGE OF PARTS AVAILABLE IN STORE



### WD-40 EZ-REACH™ 425g Flexible Straw Part No: 62007

- 20cm flexible straw.
- Gets into hard-to-reach places.
- Straw bends and keeps its shape.
- Great WD-40 formula that people know and trust!
- Ideal for professionals to accomplish difficult tasks in specific areas.
- Allows you to get behind tight spaces (e.g. behind pipes, engine blocks and wall joints).
- Penetrating power eliminates the need for many disassemblies.
- Lubricates for smooth action and stops squeaks.
- Protective film protects metals against rust corrosion.

**\$13<sup>95</sup>**  
GREAT VALUE!

### WD-40 Spray Applicator 500mL Part No: 61000

- 500mL capacity.
- Refillable spout.
- Child safety lock restraints.
- Two ways to use: stream or spray.

**\$6<sup>95</sup>**  
GREAT VALUE!

### WD-40 Specialist Penetrant 300g Part No: 21014

- Quickly penetrates rusted and corroded parts.
- Loosens seized fixings.
- For use on metal, alloys, rubber and plastic.

**\$16<sup>95</sup>**  
GREAT VALUE!

### WD-40 Multi-Use Product 4L Bulk Part No: 45040

- When you need to use a lot of WD-40, sometimes a can just isn't enough.
- Soak parts to clean parts without disassembly.
- Lubricates and protects industrial equipment.
- Cleans and removes residue from moulds.
- Penetrates stuck rigging hardware.
- Designed for use with the WD-40 Spray Applicator.

**\$39<sup>95</sup>**  
GREAT VALUE!

JOIN OUR TRADESMART MAILING LIST.

Name: \_\_\_\_\_ Surname: \_\_\_\_\_  
 Company: \_\_\_\_\_ Ph: \_\_\_\_\_  
 Address: \_\_\_\_\_



**MASTERFAN INDUSTRIAL FANS**



PRICED FROM...  
**\$99<sup>00</sup>**

MODEL  
MFF450 \$99.00  
MFW750 \$179.00  
MFP750 \$189.00

- 240V 3 Pin 10A Plug 120W (MFF450) 280W (MFW750 & MFP750)
- Airflow 2000L/s (MFF450) 4800L/s (MFW750 & MFP750)
- 3 Speeds low wattage
- Oscillation feature on wall & pedestal

**MASTERFAN MISTING FAN**



PRICED FROM...  
**\$599<sup>00</sup>**

MODEL  
MMF500 \$599.00  
MMF650 \$699.00

- 240V 3 Pin 10A Plug
- Airflow 3300L/s (500mm) 4500L/s (650mm)
- Adjustable mist volume
- Water tank holds 24L water, 6 hours full mist for MMF500 & 32L water, 4 hours full mist for MMF650

**PORTABLE AIR COOLER - AXIAL**



**\$999**  
HOT BUY!

PAC280-A

GREAT VALUE!

- 240V 3 Pin 10A Plug
- 3 sided inlet
- Swing louvre function
- 120L incorporated water tank
- Full function remote control

**PORTABLE AIR COOLER - SINGLE DIRECTION**

**\$2899<sup>00</sup>**  
GREAT VALUE!

PACISD

- 240V 3 Pin 10A Plug
- Variable fan speed
- 300L incorporated water tank
- Water level indicator
- Full function remote control



**INDUSTRIAL PORTABLE AIR CONDITIONER**

**\$3599<sup>00</sup>**  
GREAT VALUE!

IPAC-47

- 4.7kW 240V 3 Pin 10A Plug
- Cleanse & dehumidifies air
- Washable filters
- Compressor time delay
- Anti-freezing device



**LOUVRED WALL EXHAUST FAN**

PRICED FROM...  
**\$129<sup>00</sup>**

MODEL  
IWEL300 \$129.00  
IWEL350 \$149.00  
IWEL400 \$169.00

- 240V Hardwired
- Perfect for workshops & garages
- Gravity louvres to stop rain & reverse airflow
- Available in 300mm (300L/s) 350mm (630L/s) & 400mm (800L/s)



**PORTABLE VENTILATOR WITH 5M DUCTING**

**\$229<sup>00</sup>**  
HOT BUY!

MPVIFD300

- 240V 3 Pin 10A
- Airflow: 1083L/s
- 520W Motor
- Comes with 5m of ducting



**INDUSTRIAL WALL LOUVRED FAN**

**\$999<sup>00</sup>**  
GREAT VALUE!

IWLF6-11-6

- 240V Hardwired
- Airflow 5000L/s
- Internal gravity louvres
- Exhaust or supplies air
- Featuring a galvanised steel body with rain cover

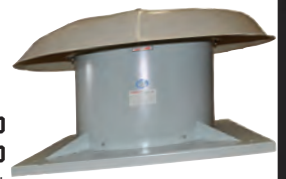


**INDUSTRIAL ROOF EXHAUST FAN**

PRICED FROM...  
**\$999<sup>00</sup>**

MODEL  
IHR4-550-4-3 \$999.00  
IHR6-11-6-3 \$1495.00

- 415V Hardwired
- Steel base & body
- Weather tight hood
- Airflow 1472L/s (400mm) 3600L/s (600mm)



**LED RECHARGEABLE WORKLIGHT**

**\$89<sup>00</sup>**  
GREAT VALUE!

MODEL  
WLCL10W-POL \$89.00  
WLCL20W-POL \$139.00

- 1050 Lumens (10W) 2100 Lumens (20W)
- IP65 rated
- Includes built in battery
- 3 modes - 100% | 50% | SOS | Flashing
- 100-240V input, 12V, 1A output adaptor & car charger
- Discharging time:  
10W - 100% - 3.5 hours | 50% - 5 hours  
20W - 100% - 3 hours | 50% - 4.5 hours



**HEAVY DUTY INDUSTRIAL EXTENSION LEADS**  
AVAILABLE IN 10 METRE TO 30 METRE LENGTHS

- Heavy duty industrial leads
- 1.5mm<sup>2</sup> core
- 15Amp cables
- LED indicators
- Durable PVC sheaths
- Compliant to AS/NZS Standards

PRICED FROM...  
**\$18<sup>95</sup>**

**10A EXTENSION LEADS**

MODEL  
10 METRE EX10A10-0 \$18.95  
15 METRE EX10A15-0 \$28.95  
20 METRE EX10A20-0 \$35.95  
25 METRE EX10A25-0 \$42.95  
30 METRE EX10A30-0 \$49.95



PRICED FROM...  
**\$19<sup>95</sup>**

**15A EXTENSION LEADS**

MODEL  
10 METRE EX15A10-B \$19.95  
20 METRE EX15A20-B \$38.95  
25 METRE EX15A25-B \$44.95  
30 METRE EX15A30-B \$52.95



**FANMASTER**  
COOLING HEATING VENTILATION DISTRIBUTION

JUST SIMPLY FILL IN YOUR DETAILS, RETURN TO YOUR NEAREST TRADESMART MEMBER AND YOU WILL RECEIVE YOUR VERY OWN CATALOGUE IN THE POST.... IT'S THAT SIMPLE!

FREIGHT CHARGES MAY APPLY





# HOT DEALS & SMART BUYS!

**SAFETY**

## maxisafe®

there's safe and there's Maxisafe.  
Call: 1300 062 947 [maxisafe.com.au](http://maxisafe.com.au)



**\$895**  
BONUS "ITEM"

### EVOLVE Clear Safety Glasses

With BONUS Foam Seal & Strap

- Modern, fashionable design
- Completely metal-free design
- Unique clip-off frames with interchangeable headband strap
- AntiScratch technology coating on the outside
- AntiFog Coat technology on the inside
- Certified to AS/NZS 13371:2010



**\$1495**  
GREAT VALUE!

GNB218  
**BLACK SHIELD Heavy Duty Nitrile Disposable Gloves**

- Amazing dexterity and feeling
- New Low Sweat Technology
- High Puncture Resistance
- Chemical Resistance to incidental splashes
- Made from 100% Nitrile
- Sizes: S, M, L, XL, XXL

**\$18900**  
GREAT VALUE!

HRE661-BT  
**MAXISAFE Bluetooth Earmuffs - Class 5 Protection**



- Class 5 protection with SLC80 rating of 32dB
- AS/NZS 1270:1999 compliant
- Stereo headset
- air the headset with your phone for automatic connection
- Approx. 10 hours play time



**\$2495**  
GREAT VALUE!

ENA357  
**NAVIGATOR "Polarized" Safety Glasses**

- Certified to AS/NZS 13371 2010
- 99.9% UV Protection
- Premium Anti-Scratch Lenses



NBR reinforced patch

**\$1295**  
GREAT VALUE!

GCF178  
**G-FORCE ULTRA C5 Work Gloves**

- 18 gauge exclusive lining delivering the thinnest and finest cut 5 nitrile glove on the market
- Abrasion resistant micro-foam nitrile coated palm
- Sanitized@ hygiene function offers increased freshness, comfort and protection
- Sizes: S, M, L, XL, XXL

## RICHMOND WHEEL & CASTOR CO

**YOUR NUMBER ONE CHOICE FOR WHEELS, CASTORS, AND MORE!**

### PNEUMATIC WHEELS STEEL CENTRED

#### 260MM OFFSET PNEUMATIC WHEEL

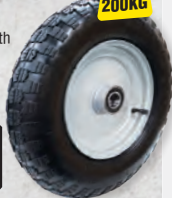
- 80mm tyre width
- 4.10/3.50-4 tyre size
- 5/8" axle



**\$1595** INC GST  
P/N: PN1071

#### 400MM PNEUMATIC WHEEL

- 100mm tyre width
- 4.00x8 tyre size
- 1" axle



**\$3395** INC GST  
P/N: PN1607

### SKATE DOLLIES

AVAILABLE IN RUBBER AND TIMBER DECK VARIETIES

#### 700 X 500MM DECK FURNITURE DOLLIE

- 400kg safe working load
- Premium rebound rubber wheels
- Slip-resistant rubber deck



**\$8900** INC GST  
P/N: SKR007

#### 700 X 500MM DECK FURNITURE DOLLIE

- 150kg safe working load
- Economical polypropylene wheels
- Timber deck with rubber pads



**\$3900** INC GST  
P/N: SKR014

### LIGHTWEIGHT FOLDING HAND TROLLEYS

PERFECT FOR QUICK, LIGHT DUTY MOVING JOBS, THESE TROLLEYS COLLAPSE FOR EASY STORAGE.

#### FOLDING TROLLEY 125MM WHEELS

- 630mm collapsed height
- 1000mm extended height



**\$5595** INC GST  
P/N: FAR001

UP TO 60KG

#### FOLDING TROLLEY 175MM WHEELS

- 790mm collapsed height
- 1060mm extended height



**\$129** INC GST  
P/N: FAR003

UP TO 125KG

### ORDER PICKER TROLLEY WITH TUB

- 100kg safe working load
- 990mm handle height
- Includes 32L recycled black tub



**\$175** INC GST  
P/N: OPR002

### FOLDING TROLLEY 175MM WHEELS

- 780mm collapsed height
- 1000mm extended height



**\$7900** INC GST  
P/N: FAR002

UP TO 90KG



FOLD DOWN FOR STORING IN SMALL SPACES SUCH AS CUPBOARDS OR A CAR BOOT.

### SAFETY STEP A WORKPLACE SAFETY ESSENTIAL

- 250KG safe working load
  - Grip tape & indented Sides
- Dimensions: 520 x 520 x 365mm



**\$7495** INC GST  
P/N: SSR002



# SHOP SMART - BUY SMART!

**SAFETY**



**\$14.95**  
GREAT VALUE!

### FULL BRIM VENTED HARD HAT WITH RATCHET HARNESS

- Air vents & cotton sweatband prevents perspiration build up
- Quick & easy single hand adjustment whilst wearing the helmet



**\$34.95**  
GREAT VALUE!

### SURGE POLARIZED MEDIUM IMPACT SAFETY GLASSES

- 99.9% UV Protection
- Anti fog & anti scratch lens
- Low pressure soft tipped arms



**\$11.95**  
GREAT VALUE!

### PROBLOC SPF50+ SUNSCREEN 250ML BOTTLE

- SPF50+ with moisturising Vitamin E
- 4 hours water resistant
- Flip top bottle



**\$59.95**  
GREAT VALUE!

### PROMESH RESPIRATOR P2 WITH VALVE & ACTIVE CARBON FILTER

- Protects against nuisance level organic vapours in addition to P2 rating
- QuickLock straps for easy fit and release
- Box of 12 masks



**\$27.95**  
GREAT VALUE!

### ADDER EARMUFFS

- Class 5, SLC<sub>90</sub> 32dB
- Hearing protection for noise levels to 116dB
- High quality soft ear cushions



**\$7.95**  
GREAT VALUE!

### PROSENSE C5 CUT RESISTANT PU DIPPED GLOVES

- EN388:2016 Cut Resistance Level "D"
- Polyurethane finish coated palm
- Breathable liner
- Sizes: 7, 8, 9, 10, 11, 12



**\$19.95**  
GREAT VALUE!

### PYROMATE TIGGA WELDERS GLOVES

- Durable deerskin provides unmatched dexterity with lighter weight
- Sewn with Kevlar thread
- Sizes: L, XL



**\$49.95**  
GREAT VALUE

### 10L DRINKS COOLER

- Dual screw top lid to give wide access for ease of cleaning and filling with ice
- Impact resistant exterior
- Screw tap for consistent flow and drip free shut off



**\$39.00**  
GREAT VALUE!

### 99% SUGAR FREE SOLO SHOTS

- Caffeine and gluten free
- 5 delicious flavours: **Blue Lemonade, Lemon Lime, Orange, Tropical, Wild Berry**
- 50 x 3g/600ml sachets per pack



**\$19.95**  
GREAT VALUE!

### 750ML STAINLESS STEEL DRINK BOTTLES

- Made of food grade 18/8 stainless steel
- Vacuum insulated double walls
- Keeps cold up to 24 hours
- Keeps hot up to 12 hours



**PRATT**  
SAFETY SYSTEMS

### FLAMMABLE LIQUID STORAGE CABINET 250L CAPACITY



**\$1749**  
GREAT VALUE!

5545AS



### NEW HOT WORKS HARNESS

- Kevlar/Nomex webbing provides high resistance to heat and does not melt when exposed to heat whereby standard polyester will
- Large Dorsal Dee Ring for easier connection
- Closed Loop Webbing System on rear Dorsal Dee maintains positioning of Dorsal Dee in the event of a fall, significantly reducing the risk of injury from hardware hitting the back of workers head
- Quick-Release Buckle

**\$495.00**  
GREAT VALUE!

H101QR-HW

FREIGHT CHARGES MAY APPLY





# HOT DEALS STOREWIDE

## CHEM / LUBRICATION

### MOTOSPRAY SUPERGLOW MULTIPURPOSE THINNER

20 Litres



**\$109.00**  
HOT BUY!

Motospray Superglow Multipurpose Thinner  
20 Litres  
P/N: SG20



### HICHEM ETCH PRIMER, SILVA GAL & COLD GAL AEROSOLS

400g Aerosols



**\$12.95**  
EACH

Hichem Etch Primer 400g Aerosol  
P/N: EP400

Hichem Cold Gal 400g Aerosol  
P/N: CG400

Hichem Silva Gal 400g Aerosol  
P/N: SGAL400



### HICHEM COLD GAL

4 Litres

**\$179.00**  
GREAT DEAL!



Hichem Cold Gal  
4 Litres  
P/N: CG4



### HICHEM SILVA GAL

4 Litres

**\$54.95**  
GREAT VALUE!



Hichem Silva Gal  
4 Litres  
P/N: SGAL4



# SUPER SUMMER DEALS!

10 YEARS WARRANTY

**\$159**  
GREAT VALUE!

#### FLEXIGUN® Grease Gun & EZ Coupler Value Bundle

- Pistol-grip action to suit 450g grease cartridges or bulk filling
- Pressures up to 68,900kPa (10,000psi)
- Includes new EZ Easy Release coupler



10 YEARS WARRANTY

**\$1299**  
GREAT VALUE!

#### POWERLUBE® Greasing System

- Compatible with 20kg (or similar size) pails
- 50:1 air-operated grease pump
- High volume output of up to 460g/min free flow
- Optional TR5-01 Dolly Trolley or TR20G Trolley available



5 YEARS WARRANTY

**\$1450**  
GREAT VALUE!

#### 300L Diesel Tank with 12V Pump Kit

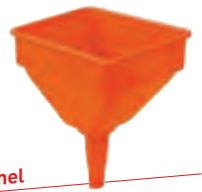
- Flow rate up to 40LPM
- 12V Electric diesel pump kit
- Built-in suction hose
- Automatic nozzle



**\$1395**  
GREAT VALUE!

#### Fuel & Oil Funnel

- Wide mouth for easy pouring of media
- Spout dimensions: 1-3/4" (45mm), 1-1/8" (29mm)
- Wetted components: Polyethylene



10 YEARS WARRANTY

**\$249**  
GREAT VALUE!

#### Retracta® Garden Reel Hose

- 18m x 1/2" Premium air hose
- Operating pressure up to 100psi



10 YEARS WARRANTY

**\$319**  
GREAT VALUE!

#### Retracta® Air/Water Reel

- 15m x 1/2" Premium air hose
- Operating pressure up to 250psi



10 YEARS WARRANTY

**\$369**  
GREAT VALUE!

#### Retracta® Air Reel

- 20m x 1/2" Premium air hose
- Operating pressure up to 250 psi



**\$2995**  
GREAT VALUE!

#### Quick Release Grease Coupler

- Four jaw design
- Compact size
- Unique lever design
- Pressures up to 10,000PSI
- 1/8" BSP (F) thread



\*Warranty subject to Macnaught Terms & Conditions. ©Macnaught Pty Ltd. 2018.





# HEAVY DUTY - BIG BOY TOYS

LUBRICATION



## TOP PERFORMING AND EFFORTLESS GREASING

### G10040N EL SERIES 18V LITHIUM-ION CORDLESS GREASE GUN

- Generates grease pressures of up to 10,000psi (690bar)
- Capable of delivering up to 80g/min
- 25 minutes continuous working time
- Supplied with two batteries, 3,000 mAh & 1,500 mAh
- Dispenses grease from up to 12 x 450g cartridges before changing over or recharging of the 3,000 mAh battery is required
- Spare battery, recharger, 106cm long grease gun flex and plastic moulded carry case supplied standard



**\$469.00**  
GREAT VALUE!

### G10010N EL SERIES TRIGGER ACTION GREASE GUN

- Grease pressures of up to 4,000psi (276bar)
- Delivery rates of up to 1.15g per stroke
- Heavy duty 4 jaw coupler



**\$59.95**

GREAT VALUE!

### 309060 12V PORTABLE OIL TRANSFER KIT

- Flow rates of up to 10L/min
- Supplied inclusive of a 2m battery connection cable with clips, 4m x 3/4" diameter oil delivery hose, on/off control valve and intake hose filter

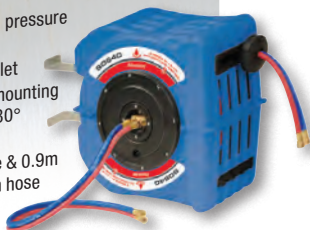


**\$1,199.00**

GREAT VALUE!

### SO640 OXY-ACETYLENE HOSE REEL

- Maximum working pressure of 300psi (20bar)
- 5/8" UNF inlet/outlet
- Detachable steel mounting bracket enables 180° hose reel rotation
- 8m x 6mm ID hose & 0.9m twin rubber lead in hose



**\$469.00**

GREAT VALUE!

### BRP5216 / BRP5216-YAB CAUTION / DANGER SAFETY BARRIER REELS

- Provides a temporary barrier to clearly identify dangerous areas
- Automatic spring rewind mechanism
- Swivelling steel wall bracket
- 16m x 52mm durable band with eyelet
- BRP5216 red/white band
- BRP5216-YAB yellow/black band



**\$359.00**

EACH

### ST1-100C / ST1-60C / ST1-30C SPILL TRAYS WITH PLATFORM

- 100% recyclable polyethylene construction
- Can be used with or without platform
- Includes non-slip platform

ST1-100C (100L)

**\$469.00**

GREAT VALUE!

ST1-60C (60L)

**\$319.00**

GREAT VALUE!

ST1-30C (30L)

**\$229.00**

GREAT VALUE!



### 424150 20KG GREASE KIT WITH TROLLEY

- High pressure 55:1 ratio pump
- Up to 7,950psi (548bar) grease pressure
- The heavy duty air motor free of external plastic components
- Built in filter protects against pump tube contamination

**\$1,199.00**

GREAT VALUE!



For more information visit [www.alemlube.com.au](http://www.alemlube.com.au)



\*Applies to the vast majority of Alemlube products unless indicated otherwise

FREIGHT CHARGES MAY APPLY





# HOT DEALS & SMART BUYS!

## WORKSHOP

# LIFTING & MATERIALS HANDLING SOLUTIONS

**BEAVER** **50MM MULTI PURPOSE RTD ASSEMBLY**

- 50mm x 9m with hook and keeper
- LC 2500kg
- Code: RTD055PL



**\$16<sup>95</sup>**  
EACH

**BEAVER** **35MM MULTI PURPOSE RTD ASSEMBLY**

- 35mm x 6m with hook
- LC 1500kg
- Code: 349035RB



**\$16<sup>95</sup>**  
EACH

**BEAVER** **SYNTHETIC ROUND SLINGS**

Code	Description	Special Offer
MRS1000X1	Round Lifting Sling 1000kg x 1mtr	\$4.95
MRS1000X2	Round Lifting Sling 1000kg x 2mtr	\$8.95
MRS1000X3	Round Lifting Sling 1000kg x 3mtr	\$12.95
MRS1000X4	Round Lifting Sling 1000kg x 4mtr	\$16.95
MRS2000X1	Round Lifting Sling 2000kg x 1mtr	\$6.95
MRS2000X2	Round Lifting Sling 2000kg x 2mtr	\$11.95
MRS2000X3	Round Lifting Sling 2000kg x 3mtr	\$17.95
MRS2000X4	Round Lifting Sling 2000kg x 4mtr	\$24.95
MRS3000X1	Round Lifting Sling 3000kg x 1mtr	\$9.95
MRS3000X2	Round Lifting Sling 3000kg x 2mtr	\$17.95
MRS3000X3	Round Lifting Sling 3000kg x 3mtr	\$24.95
MRS3000X4	Round Lifting Sling 3000kg x 4mtr	\$33.95

**BEAVER** **8MM TRUCKERS RATCHET BINDER**

- Heavy duty
- Comes with winged eye grab hooks
- Code: 344008



**\$45<sup>95</sup>**  
EACH

**Black Rat** **GRUNT 12V AIR COMPRESSOR**

- Double pump
- Huge air flow to 150psi
- Code: GC400



**\$99<sup>00</sup>**  
EACH

**BEAVER** **GRADE 70 TRANSPORT CHAIN KIT**

- 8mm x 9m with winged grab hooks each end
- LC 3800kg
- Code: 145128



**\$54<sup>95</sup>**  
EACH

**FRONTIER** **JUGNAUT 5 LITRE COOLER BLUE & ORANGE**



**\$32<sup>95</sup>**  
EACH

- Wide base for sturdiness
- Fully retractable quick access spout, push button water release
- Codes: FRCOOLJUGBL005L/FRCOOLJUG00005L

**FRONTIER** **JUGNAUT 2.5 LITRE COOLER BLUE & ORANGE**



**\$17<sup>95</sup>**  
EACH

- Retractable pouring spout
- Removable cup
- Codes: FRMINIJUGBL2500/FRMINIJUG002500

**B-Safe** **TRADIES ROOFERS KIT**



**\$199<sup>00</sup>**  
EACH

- Fall arrest harness
- 15m kermantle rope safety line with twist
- Lock karabiner and manual rope adjuster
- 25mm attachment strap rated for 1 person
- Tear webbing shock absorber, loops each end
- Alloy steel twist lock karabiner x3
- Code: BK061215TRAD

**m7** **PNEUMATIC TOOLS**  
LIGHTER | QUIETER | MORE POWERFUL

**1/2" DRIVE AIR IMPACT WRENCH**

1200 FT-LB MAX TORQUE

- Lightweight - Only 1.7KG!
- Super Powerful
- 1200ft-lb Max Torque!
- Value For Money
- High quality & specs
- 85DB Noise level
- 25mm Bolt capacity
- 4.8 CFM Air consumption

**\$319.00**  
GREAT VALUE  
M7-NC4255Q

**AIR NEEDLE SCALER**

- Blow per minute : 5500 BPM
- Length : 290mm
- Net weight : 1.3kg
- Needle size : 3 x 123mm (12 per set)

**\$189.00**  
GREAT VALUE  
M7-SN1288

**AIR HYDRAULIC RIVETER**

- Traction power: 2303 lbf
- Alloy rivet: 3/16"
- Steel rivet: 3/16"
- Stainless rivet: 5/32"
- Stroke length: 16mm
- Net weight: 1.5kg

**\$219.00**  
GREAT VALUE  
M7-PA301

**Holemaker**  
MAGNETIC BASE DRILLING MACHINES | CUTTING TOOLS

**HOLEMAKER PRO 35 MAGNETIC BASE DRILL**

- Quality, Compact & Robust
- European Made Machine
- Lightweight, only 10kg!
- Ideal for onsite & overhead tasks
- Capacity (diameter) 35mm
- Capacity (depth) 52mm
- Gravity feed coolant
- Includes plastic carry case

TradeSmart Bonus Deals!  
14, 18, 22MM CUTTERS & PIN ASSET-Z VALUED AT \$182.60

**\$995.00**  
GREAT VALUE  
HMPRO35

**Drill Doctor**  
The Drill Bit Sharpener

**DRILL DOCTOR XP DRILL BIT SHARPENER**

- 2.5mm to 13mm drill bit capacity
- Creates & sharpens split point bits
- 118° sharpening angle
- Adjustable relief angle
- 240V motor
- 3 year warranty

**\$249.00**  
GREAT VALUE  
DDXP



# WHEN HEAVY DUTY MATTERS!

## COMPRESSORS

# M<sup>C</sup>MILLAN

Air Compressors Since 1954



**\$995**  
GREAT VALUE!

### M<sup>C</sup>MILLAN AB17

#### BELT DRIVEN AIR COMPRESSOR 2.2KW / 3.0HP

- 240V Motor, 15 Amp
- Piston Displacement 13.0 CFM
- F.A.D. 10.8 CFM
- ABAC 2 Cylinder Pump
- 100 litre tank
- Fitted with filter regulator



**\$1099**  
GREAT VALUE!

### M<sup>C</sup>MILLAN C12

#### BELT DRIVEN AIR COMPRESSOR 1.65KW / 2.2HP

- TECO motor, 240V, 10Amp
- Piston displacement 12.3 CFM
- F.A.D. 8.4 CFM
- 2 Cylinder cast-iron pump
- 60 litre tank
- Fitted with filter regulator



**\$1299**  
GREAT VALUE!

### M<sup>C</sup>MILLAN C16

#### BELT DRIVEN AIR COMPRESSOR 2.2KW / 3.0HP

- TECO motor, 240V, 15Amp
- Piston displacement 16 CFM
- F.A.D. 11.6 CFM
- 3 Cylinder cast-iron pump
- 60 litre tank
- Fitted with filter regulator



**\$1995**  
GREAT VALUE!

### M<sup>C</sup>MILLAN CP19

#### PETROL AIR COMPRESSOR HONDA 6.5HP ENGINE

- 2 Cylinder cast-iron pump
- Piston displacement 18.1 CFM
- F.A.D. 12.2 CFM
- 60 litre tank
- Auto Idle Control
- 10" Pneumatic Wheels
- Removable Handle



**WIN \$3000**

Go in the draw to win \$3000 cashback when you purchase any Peerless Products Petrol or Diesel Air Compressor. See [www.peerlessproducts.com.au](http://www.peerlessproducts.com.au) for full terms.\*

### PHP15 High Pressure

- Free Air Delivery @ 150PSI: 300 LPM
- 3.5HP single phase motor
- 3 cylinder, 2 stage, cast iron pump
- Amps Draw: 13 • 110 litre air receiver
- Max PSI: 175 • Pump RPM: 1132
- Warranty: 5 Year Pump, 1 Year Motor

**\$1799<sup>00</sup>**  
00105

**BONUS!**  
20m Air Hose  
(00348)



**\$899<sup>00</sup>**  
00092

### P13 Electric Belt Drive

- Free Air Delivery @ 100PSI: 240 LPM
- 2.5HP, single phase – 10Amp motor
- Max PSI: 145
- 48L air receiver
- Warranty: 5 year pump, 1 year motor

**BONUS!**  
20m Air Hose  
(00348)



**\$279<sup>00</sup>**  
PB2500

### Peerless Black 2500

- Free Air Delivery: 154 LPM
- 2.5HP Electric motor
- 30 Litre Air Receiver • Amps Draw: 8
- Max PSI: 145 • Pump RPM: 2850
- Warranty: 1 year total unit



**\$699<sup>00</sup>**  
PB14000

### Peerless Black 14000 Electric

- Free Air Delivery: 220 LPM
- 2.5HP Electric motor
- 50 Litre Air Receiver
- Amps Draw: 9.3 • Max PSI: 145
- Pump RPM: 895 • Warranty: 1 year total unit

**BONUS 20M HOSE**  
(00348)



**\$1899<sup>00</sup>**  
PB17000PR

### Peerless Black 17000 Petrol Roll Cage

- Free Air Delivery: 320 LPM
- GX200 Honda Motor
- 9 Litre Air Receiver
- Max PSI: 145 • Pump RPM: 1100
- Warranty: 1 year pump, 3 year Honda motor

**BONUS 20M HOSE**  
(00348)



**\$1599<sup>00</sup>**  
PB17000P

### Peerless Black 17000 Petrol

- Free Air Delivery: 320 LPM
- GX200 Honda Motor
- 50 Litre Air Receiver
- Max PSI: 145 • Pump RPM: 1100
- Warranty: 1 year pump, 3 year Honda motor

**BONUS 20M HOSE**  
(00348)

FREIGHT CHARGES MAY APPLY





# SHOP SMART - BUY SMART!

WELDING

**Weldclass**  
Customer driven innovation.

best sellers...

Nov 2018 - Jan 2019

**Promax 200**

- Shade 9-13
- Grind Mode
- Magnification lens holder
- 96x39mm viewing area with Ultra-Clear vision



**GREAT VALUE!**  
**\$79<sup>00</sup>**  
WC-05311

**Promax 350**

- Shade 9-13, sensitivity & delay adjustment
- Grind Mode
- 4 sensors
- 100x53mm viewing area with Ultra-Clear optics
- Magnification lens holder
- High impact rated to AS/NZS 1337.1



**BEST SELLER!**  
**\$139<sup>00</sup>**  
WC-05314

**BEST SELLER!**  
**\$129<sup>00</sup>**  
WC-05313



'Fire Metal'

**Promax 500**

- Dual shade mode: (9-13 / 5-8) & grind mode
- Super-size viewing area 98x87mm (85cm<sup>2</sup>)
- 4 sensors
- Magnification lens holder
- High impact rated to AS/NZS 1337.1
- TIG optimised (>5 Amps)



**BEST SELLER!**  
**\$189<sup>00</sup>**  
WC-05317

Massive view area!

**Platinum GL-11**

**Gasless Wire 0.9mm 4.5kg**

- Ultra-Smooth Arc with Minimal Spatter
- Premium E71T-11 Multi Pass Grade
- Ideal for welding mild & galvanized (Gal) steels
- Super Easy to use



Australia's No. 1 Gasless wire!

**BEST SELLER!**  
**\$79<sup>00</sup>**  
2-098FM

**Promax E-21**

**Gasless Wire 0.9mm 4.5kg**

- Industrial grade, good allrounder
- Suitable for All-Positional, and Multi-Pass Welds E71-T11
- For welding mild & galvanized (Gal) steels



Great value for money!

**GREAT VALUE!**  
**\$65<sup>00</sup>**  
WC-00260

**PROMAX HV5**

**FR Welding Jacket**

- Comfortable, light weight & cool
- Hi-vis orange
- For protection during welding, cutting & grinding



**GREAT VALUE!**  
**\$44<sup>95</sup>**

M - WC-05261    XL - WC-05263  
L - WC-05262    2XL - WC-05264



**\$1,899<sup>00</sup>**  
**GREAT VALUE!**

**Speedtec 200C – Tough and Reliable**  
Part Number: K14099-2

Innovative, Portable and Lightweight, Anyplace, Anywhere. More Welding Power, Energy and Cost savings, Generator Compatible. Icon control colour TFT Interface screen Robust, Reliable and Professional.



**\$999<sup>00</sup>**  
**GREAT VALUE!**

**POWERCRAFT™ TIG 205 DC**  
Part Number: K69029-4  
Small and light weight yet versatile. Processes include Stick, DC TIG, DC TIG/Pulse, AC TIG, AC TIG/Pulse, TIG/Spot. Full function user-friendly control panel. Rugged construction.



**\$399<sup>00</sup>**  
**GREAT VALUE!**

**POWERCRAFT™ 161 Stick Welder**  
Part Number: K69042-1

Ideal for maintenance, small repairs & general fabrication. Compact, lightweight with shoulder strap. Built in "hot Start" for excellent arc striking. Ready-to-Weld™

**\$199<sup>00</sup>**  
**PROTECTION**

**Viking® Red Splat Welding Helmet**

Part Number: K32068-1  
Auto Darkening Welding hood with 90x110 mm cartridge and 96x47 mm viewing area. Infinite control of Shade, Sensitivity and delay. 2 Arc Sensors. Magnifying Cheater lens capable and hard hat adapter capable.



**\$199<sup>00</sup>**  
**PROTECTION**

**Viking® Tribal Welding Helmet**

Part Number: K2812-1  
Solar-powered, 9-13 shade external control along with being "Cheater" lens capable. Continuously variable sensitivity and variable delay.



**LINCOLN®**  
**ELECTRIC**  
THE WELDING EXPERTS™



Follow us on facebook: <https://www.facebook.com/LincolnElectricAustralia>  
[www.lincolnelectric.com.au](http://www.lincolnelectric.com.au)



# WHEN HEAVY DUTY MATTERS!

WELDING

www.unimig.com.au

Receive an EXTRA 6 MONTHS WARRANTY when you register online

## UNIMIG

### Oxygen & Acetylene Professional Industrial Gas Set

DELUXE OXY ACETYLENE KIT WITH FLASH BACKS



**\$419**  
GREAT VALUE!

KKOXY1

### Oxygen & LPG / Propane Professional Industrial Gas Set

DELUXE OXY LPG KIT WITH FLASH BACKS



**\$419**  
GREAT VALUE!

KKOXY2

### RWX8000 UNIMIG Automatic Welding Helmet

4 Arc Sensors, Enhanced Viewing Area, True Colour, Grind Mode, Memory Function, Variable Shade Control 5-9 and 9-13.



**\$199**  
GREAT VALUE!

UMCWH

### RAZORWELD 140 AMP MMA/TIG Kit

Razorweld 140 MMA/TIG with Electrodes, Rogue Welding Gloves and Chipping Hammer.



**\$329**  
GREAT VALUE!

TS140KIT

### RAZORWELD 200 AC/DC with Foot Control

Razorweld 200 AC/DC with Foot Control.



**\$1499**  
GREAT VALUE!

TS200ACDC

### Viper MIG 185 Kit

Viper MIG 185 with Viper Pro Helmet, Rogue Welding Gloves and Electrodes.



**\$799**  
GREAT VALUE!

TSVIPER185MIG

### EVO 141 & EVO 181 MMA-TIG INVERTER WELDER

**\$249.00 EA** GREAT DEAL! P/N: 600141  
**\$299.00 EA** GREAT DEAL! P/N: 600181

**FEATURES**

- IGBT Inverter Technology
- Digital LCD Display
- Excellent arc stability
- Lightweight and portable
- EVO 141 Electrode size 1.6 - 3.2mm
- EVO 181 Electrode size 1.6 - 4.0mm



### MIG 186 BUNDLE DEAL

**\$799.00** GREAT VALUE

**COMPLETE WITH**

- 1 x Bossweld MIG 186 Gas/Gasless MIG Welding Machine
- 1 x BossSafe Wide View Electronic Welding Helmet
- 1 x Pair BossSafe 16" Black & Gold Welding Glove
- 1 x Spool Bossweld 0.8mm x 4.5kg Gasless GS MIG Wire
- 1 x Spool Bossweld 0.8mm x 5kg MIG Wire
- 1 x Bossweld Universal Welders Trolley

**TECHNICAL DATA**

- Power Supply 240V, 15 Amp
- MIG Duty Cycle - 10% @ 180A
- MIG Output Current Range 59-180A
- MIG Wire Diameter 0.6 - 1.0mm
- Power Source weight 28 Kg



### TC16 'STRIKE EM! YOU'LL LIKE EM!' HYDROGEN ELECTRODES

**FEATURES OF TWIN COATING**

- The inner coating, closest to the core wire, produces excellent arc striking characteristics with superior arc stability
- The outer coating contributes to the x-ray quality weld metal while also being designed for welding with the new inverter technology
- The TC16 is the ideal choice for maintenance welding applications including repair of earth moving equipment, farm machinery and all applications where high strength is required.

**NEW PRODUCT**

CODE	DESCRIPTION	PRICE
110430	Bossweld TC16 Electrode x 2.6mm x 25 STK	\$18.95/pkt
110400	Bossweld TC16 Electrode x 2.6mm x 2 Kg	\$29.95/pkt
110450	Bossweld TC16 Electrode x 3.2mm x 6 STK	\$12.95/pkt
110440	Bossweld TC16 Electrode x 3.2mm x 25 STK	\$17.95/pkt
110410	Bossweld TC16 Electrode x 3.2mm x 5 Kg	\$49.95/pkt
110420	Bossweld TC16 Electrode x 4.0mm x 5 Kg	\$55.95/pkt



### WIDE VIEW ELECTRONIC WELDING HELMET

**\$95.00 EA** HOT BUY!

**BOSSSAFE**

**FEATURES**

- Wide viewing area 100mm x 67mm
- Light weight
- Shade adjustable from shades 9-13



Urban P/N: 700197  
Street P/N: 700198  
Blaze P/N: 700199  
Graphite P/N: 700200

# BOSSWELD

RELIABLE WELDING GEAR

FREIGHT CHARGES MAY APPLY





EQUIPMENT

NEW

**Dy-Mark**  
**BOND COVER**  
TOUCH UP PAINT



- Matches Colorbond® satin finish
- Maintenance & repair of fences, gutters, fascia & more
- Available in an extensive range of 22 colours

**\$10<sup>95</sup>\***  
300G - EACH

**ZINC GUARD**  
RUST CONVERTER



**\$43<sup>95</sup>\***  
1L - EACH

Code: 230733100

**\$28<sup>95</sup>\***  
500ML - EACH

Code: 230733050

**GUARD AGAINST CORROSION**

- Converts and seals rust in one easy step
- No residue to wash off before recoating
- Tannic acid based

**ZINC GUARD**  
**QUICK DRY ENAMEL**  
HAMMERED METAL FINISH



Hammered Charcoal  
Code: 230932413



Hammered Black  
Code: 230932401



Hammered Blue  
Code: 230932403



Hammered Silver  
Code: 230932410

**\$9<sup>95</sup>\***  
325G - EACH

\*All prices GST inclusive

**GUARD AGAINST CORROSION**

- Quick Drying Enamel top coat (touch dry in 10-15 minutes)
- Protect surfaces against rust whilst providing superior coverage with a durable finish

**suttontools**  
world class cutting tools

TOOL DEALS YOU NEED



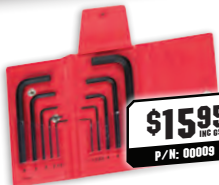
**\$41<sup>95</sup>**  
INC GST  
P/N: 22199

**22 Pce Hex-end L-wrench Set**  
Contains: 12199 & 12137  
Sizes: .050-3/8" + 1.5-10mm



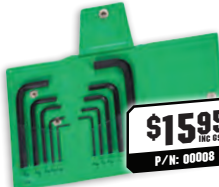
**\$4<sup>99</sup>**  
INC GST  
P/N: 10985

**15 Pce Metric Ball-end L-wrench Set**  
Sizes: 1.27, 1.5, 2, 2.5, 3, 3.5, 4, 4.5, 5, 5.5, 6, 7, 8, 9, 10mm



**\$15<sup>95</sup>**  
INC GST  
P/N: 00089

**10 Pce Metric Hex Key L-Wrench Set (Short)**  
Sizes: 1.3, 1.5, 2, 2.5, 3, 4, 5, 6, 8, 10mm



**\$15<sup>95</sup>**  
INC GST  
P/N: 00088

**10 Pce Imperial Hex Key L-Wrench Set (Short)**  
Sizes: 1/16, 5/64, 3/32, 1/8, 5/32, 3/16, 7/32, 1/4, 5/16, 3/8"



**\$11<sup>000</sup>**  
INC GST  
P/N: PG2

**2 Pce Insulated Cutting & Linesman Pliers Set**  
Contains: 3238 - 212mm & 3248 - 216mm



**\$5<sup>99</sup>**  
INC GST  
P/N: 3238

**Insulated Cutting Pliers**  
Insulated to 1000V these pliers are ideal for electrical tradespeople.



**\$5<sup>99</sup>**  
INC GST  
P/N: 3248

**Insulated to 1000V**  
**Linesman's Insulated Pliers**  
Insulated to 1000V these pliers are ideal for electrical tradespeople.

**TRADESMART MEMBERS:** ACT: • Fyshwick NSW: • Albury • Bega • Beresfield • Broken Hill • Coffs Harbour • Coonamble • Cowra • Deniliquin • Erina • Forbes • Goulburn • Hay • Lismore • Lithgow • Moorebank • Muswellbrook • Narrabri • Penrith • Tamworth • Tumut • Wetherill Park • Young QLD: • Bundaberg • Clermont • Coomera • Caloundra • Capella • Charleville • Chinchilla • Gladstone • Longreach • Moranbah • Mount Isa • Rockhampton • Proserpine • Roma • Springsure • Toowoomba • Tully SA: • Berri • Kilburn • Mt Barker • Naracoorte • Newton • Penola TAS: • Invermay • Moonah • Ulverstone VIC: • Cobram • Dandenong • Geelong North • Geelong West • Horsham • Laverton Nth • Mansfield • Mildura • Sale • Shepparton • Tullamarine WA: • Albany • Bibra Lake • Busselton • Narragin • Kalgoorlie • Osborne Park • Moora

• ALL PRICES INCLUDE GST • Some products are subject to plus freight costs where applicable • Some advertised products may not be available at all stores & maybe subject to availability. • Prices are valid while stocks last and we reserve the right to correct any errors or omissions without prior notice • Images shown throughout this catalogue are for illustrative purposes only - some items may vary.